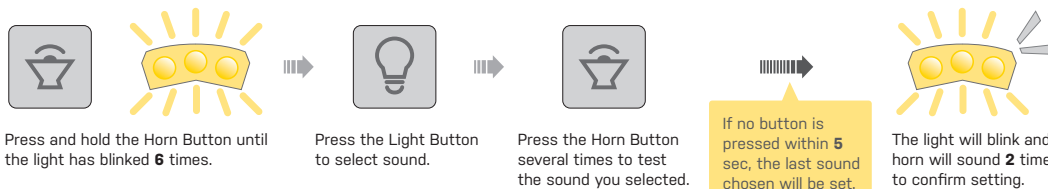


SPECIFICATIONS

Function : 0.6W Constant / Blinking
Burn Time : 4 hr. / 30 hr.
Luminous : 70 Lumens / 28 Lux/5M
Lamp : 0.2W LED x 3
Horn : 75-97 dB, 3W speaker, 4 sounds
Battery : 3.7V 600 mAh Lithium Ion
Charge : USB power supply 5V 500 mA
Weight : 58 g / 2.05 oz.
Reserve Time : 0.5 hr.

SOUND SELECTION

SELECTING MODE



WARRANTY

1-year Warranty: All mechanical components against manufacturer defects only.

Warranty Claim Requirements

To obtain warranty service, you must have your original sales receipt. Items returned without a sales receipt will assume that the warranty begins on the date of manufacture. All warranties will be void if the product is damaged due to user crash, abuse, system alteration, modification, or used in any way not intended as described in this manual.

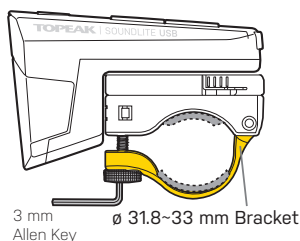
* The specifications and design are subject to change without notice.

Please contact your Topeak dealer with any questions. For USA customer service call : 1-800-250-3068
www.topeak.com



INSTALLATION OF HANDLEBAR MOUNT

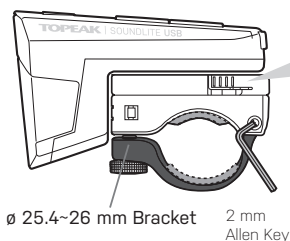
for ø 31.8~33 mm Handlebar



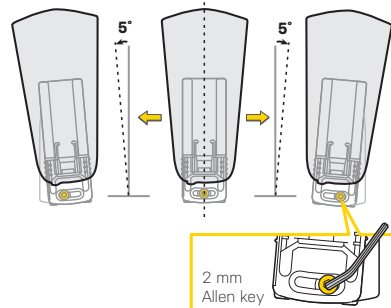
Rubber Pad A



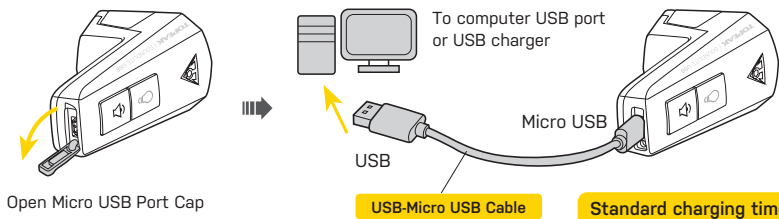
for ø 25.4~26 mm Handlebar



ANGLE TOE-IN ADJUSTMENT



BATTERY CHARGING



- The SoundLite USB Horn Button will be lit GREEN when charging. LED will turn off when battery is fully charged.
- The SoundLite USB On/ Off Button will be lit RED when the remaining battery power is low. Please charge the light as soon as possible.
- The SoundLite USB LED will not illuminate if the battery is faulty.
- Disconnect the Micro-USB cable from your computer port when the SoundLite USB is removed.
- After SoundLite USB is fully charged, unplug the USB cable.
- Do not open light body.
- Li-ion battery may take 3 to 5 charging cycles to attain full capacity.
- Do not leave battery connected to charge source over 48 hours continuously.
- Charging with USB hub will take longer.
- After long periods of non-use, the battery will lose charge. Always charge the battery fully before each use and storage.
- Maintain the battery by charging it every two months and storing it in a cool, dry place to prevent from decreasing its lifespan.
- Safely and properly dispose of the old Li-ion batteries according to your local regulations.

WARNING

• SOUNDLITE USB has sensor which can connect with Wireless Remote Control (optional accessory, includes in TMS077 series). The sensor will be turn off in original setting.

• Press and hold Light Button for 5 secs to turn light sensor on/off.



- This product might be interfered by wireless communication transmission equipment (ex. cellphone, radio or WiFi, etc) or high power electrical equipment (ex. computer or electrical device). To extend battery life, turn off sensor when not in use.
- Pacemaker users should never use this device.
- Volume output of SoundLite may be affected by water. Normal volume output will resume when unit has dried.
- Although SoundLite USB is water-resistant (under normal weather conditions of rain, etc.) never intentionally submerge it underwater.
- For ultimate safety, the SoundLite USB should be used in conjunction with a specific night riding light.
- In addition to its brightness, the beam is widely diffused. In case you need to use this light on public roads, be sure to adjust the angle downward so as not to blind oncoming traffic.





Wireless Sound Controller for SOUNDLITE USB

GB

User's Guide



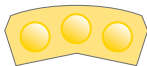
Wireless Sound Controller with CR2032 x 1
Fits ϕ 25.4 mm tube

SPECIFICATIONS

Battery : CR2032 x 1
Operating Time : 1000⁺ times
Weight : 15 g / 0.53 oz.

HOW TO TURN ON/OFF HORN SENSOR

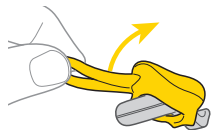
Please follow the procedure to turn on the sensor of light before first use.



Press and hold the Light Button for 5 sec.

When the light turns off, the setting is completed.

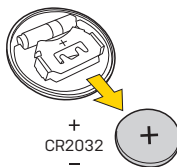
BATTERY CHANGING



Remove the Rubber Cover first



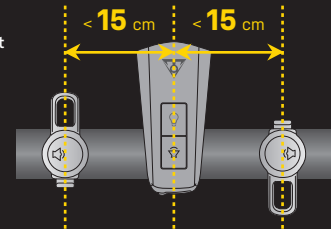
Open the sensor



+ CR2032
-

NOTE

1. The distance between light body and wireless sound controller must be under 15 cm / 5.9".
2. When mounting on handlebar, the icon on wireless sound controller (🔊) should face toward light body (as shown) for better connection.
3. Recommended: Install light and wireless sound controller on the same side.



WARNING

- **SOUNDLITE USB** has sensor which can connect with **Wireless Sound Controller** (optional accessory, includes in TMS077 series). The sensor is set to "off" in default setting.
- **Press and hold Light Button for 5 secs to turn horn sensor on/off.**
- This product might be interfered by wireless communication transmission equipment (ex. cellphone, radio or WiFi, etc) or high power electrical equipment (ex. computer or electrical device). To extend battery life, turn off sensor when not in use.
- Pacemaker users should never use this device.
- Volume output of SoundLite may be affected by water. Normal volume output will resume when unit has dried.
- Although Wireless Sound Controller is water-resistant (under normal weather conditions of rain, etc.) never intentionally submerge it underwater.

WARRANTY

1-year Warranty: All mechanical components against manufacturer defects only. Battery is not covered under any implied warranty.

Warranty Claim Requirements

To obtain warranty service, you must have your original sales receipt. Items returned without a sales receipt will assume that the warranty begins on the date of manufacture. All warranties will be void if the product is damaged due to user crash, abuse, system alteration, modification, or used in any way not intended as described in this manual.

* The specifications and design are subject to change without notice.

Please contact your Topeak dealer with any questions.
For USA customer service, call : 1-800-250-3068
www.topeak.com

